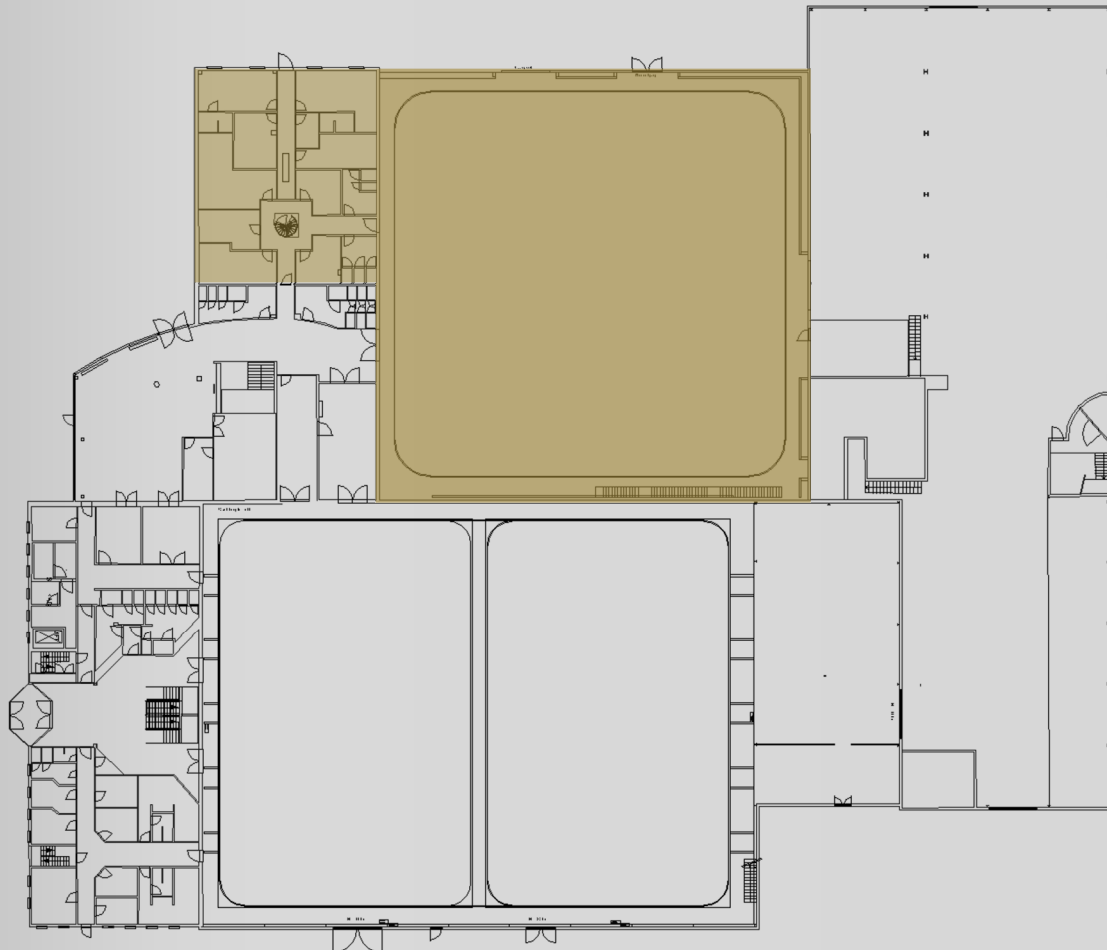


Technical Sheet STUDIO 2



STUDIO FLOOR :

- Total floor area: 35m (L) x 35m (W) = 1225m²
 - Free floor area: 31,50m (L) x 31,50m (W) = 992m² (inside cyclo)
 - Height under catwalks: 9,75m
 - Rigging beams: 12m
 - Ceiling: 14,65m
- Floor type:
- Polybeton (Epoxy)

GRID:

- 87 lighting booms of 3m with 3 circuits (load-bearing capacity: 125kg)
 - 12 lighting booms of 9m with 3 circuits
- All circuits in the studio are connected with Harting 16 connectors in the dimmer room.

POWER SUPPLY:

- Total of 1000 kVA/ 3 x 380 + N, subdivided into:
Number - Amperes/phase – Connector - Location
- 1 x 250 A Powerlock Studio
 - 1 x 125 A CEE Studio
 - 2 x 63 A CEE Studio
 - 8 x 32 A CEE Studio
 - 3 x 250 A Powerlock Dimmer Room

ACCESS :

- Emergency doors:
- 2 x 2,34m (W) Double emergency doors
 - 2 x 0,93m (W) Single emergency doors
- Studio access:
- From storage to studio: 4 m (W) x 6,25 m (H)
 - From street to studio: 4 m (W) x 3,98 m (H)
 - From Studio to dressing rooms: 0,94 m (W) x 2,07 m (H)
 - Loading platform height relative to ground: 0 m

CURTAINS :

- Black: covers the entire studio
 - Neutral light grey cyclorama: 60m
- the cyclorama system has 1 circuit
All curtains are fireproof

BUILDING FACILITIES :

- Dressing rooms: 6 units (Average area 13 m²)
 - Mirror
 - Dresser
 - Chair
- Luxury dressing rooms : 2 units (20 m² + 5 m²)
 - Mirror
 - Dresser
 - Chair
 - Shower + washbasin
- Make-up room: 17 m²
 - Mirrors with lighting
 - Work surface
 - Washbasin with hot and cold water
- Production room