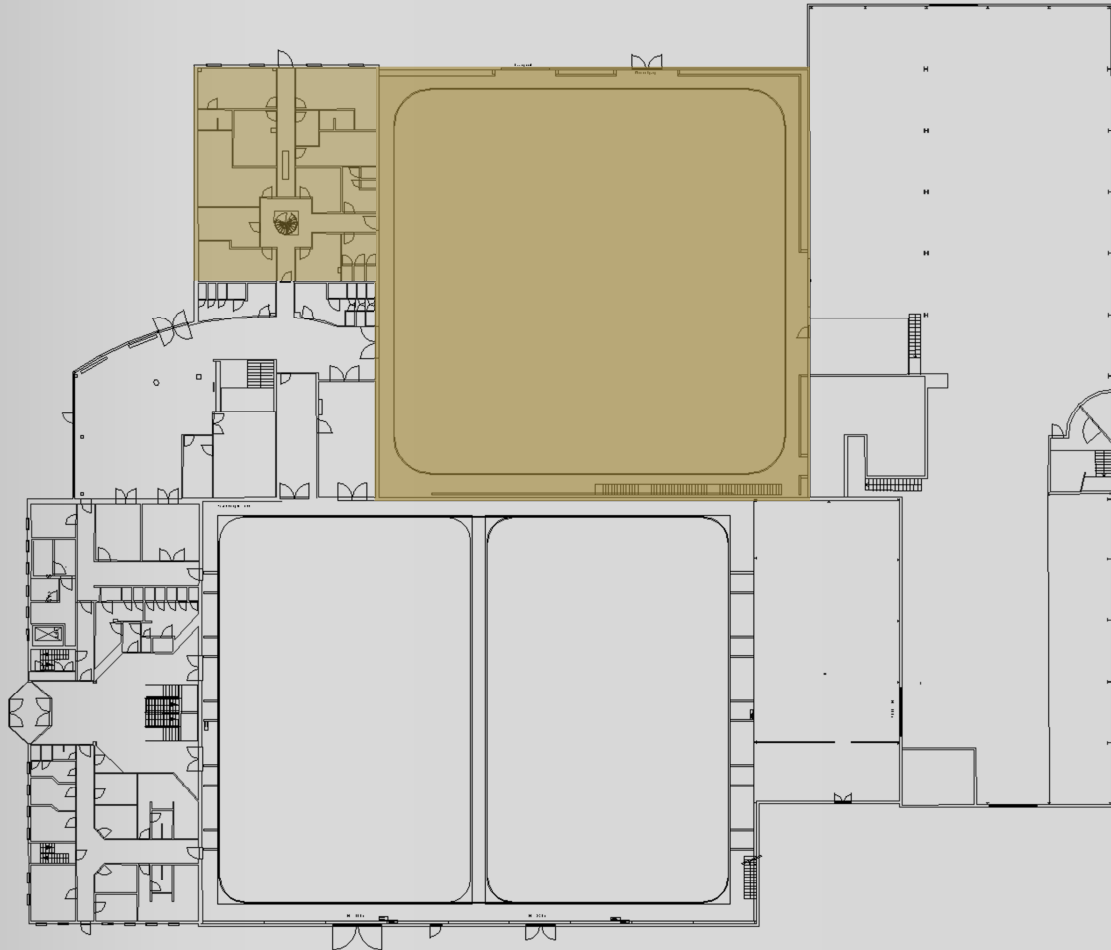


# Technical Sheet STUDIO 2



## STUDIO FLOOR :

- Total floor area: 35m (L) x 35m (W) = 1225m<sup>2</sup>
  - Free floor area: 31,50m (L) x 31,50m (W) = 992m<sup>2</sup> (inside cyclo)
  - Height under catwalks: 9,75m
  - Rigging beams: 12m
  - Ceiling: 14,65m
- Floor type:
- Polybeton (Epoxy)

## GRID:

- 87 lighting booms of 3m with 3 circuits (load-bearing capacity: 125kg)
  - 12 lighting booms of 9m with 3 circuits
- All circuits in the studio are connected with Harting 16 connectors in the dimmer room.

## POWER SUPPLY:

Total of 1000 kVA/ 3 x 380 + N, subdivided into:

*Number - Amperes/phase - Connector - Location*

- 1 x 250 A Powerlock Studio
- 1 x 125 A CEE Studio
- 2 x 63 A CEE Studio
- 8 x 32 A CEE Studio
- 3 x 250 A Powerlock Dimmer Room

## ACCESS :

Emergency doors:

- 2 x 2,34m (W) Double emergency doors
- 2 x 0,93m (W) Single emergency doors

Studio access:

- From storage to studio: 4 m (W) x 6,25 m (H)
- From street to studio: 4 m (W) x 3,98 m (H)
- From Studio to dressing rooms: 0,94 m (W) x 2,07 m (H)
- Loading platform height relative to ground: 0 m

## CURTAINS :

- Black: covers the entire studio
  - Neutral light grey cyclorama: 60m
- the cyclorama system has 1 circuit  
All curtains are fireproof

## BUILDING FACILITIES :

- Dressing rooms: 6 units (Average area 13 m<sup>2</sup>)
  - Mirror
  - Dresser
  - Chair
- Luxury dressing rooms : 2 units (20 m<sup>2</sup> + 5 m<sup>2</sup>)
  - Mirror
  - Dresser
  - Chair
  - Shower + washbasin
- Make-up room: 17 m<sup>2</sup>
  - Mirrors with lighting
  - Work surface
  - Washbasin with hot and cold water
- Production room